

Q1 2019 Board Report

ONU Weber Leadership Center, Bourbonnais, IL
Thursday, February 7, 2019

- **Milken Institute Best-Performing Cities Index 2018**
- **Measure of job, wage and salary, and technology growth**
- **#1 Small Metro in Illinois (2013, 2014, 2016, 2017, 2018)**
- **Jumped from #77 ranking in 2017 to #26 in 2018**
- **201 Small Metros indexed**
- **CLICK IMAGE to download report**



- Illinois businesses added jobs in 12 metro areas in December 2018, with the largest increase in Kankakee (+5.0% , +2,400)
- Kankakee MSA led IL in job growth in 9 months in 2018.
- Kankakee MSA led IL in job growth in 6 months in 2017.

NEWS RELEASE

Most Metro Areas Continue Adding Jobs

Unemployment rate up in thirteen metros

Not Seasonally Adjusted Unemployment Rates

Metropolitan Area	Dec. 2018	Dec. 2017	Over-the-Year Change
Bloomington	4.5%	3.6%	0.9
Carbondale-Marion	5.2%	4.3%	0.9
Champaign-Urbana	4.4%	3.7%	0.7
Chicago-Naperville-Arlington Heights	3.6%	4.9%	-1.3
Danville	6.4%	5.7%	0.7
Davenport-Moline-Rock Island, IA-IL	4.5%	4.1%	0.4
Decatur	6.2%	5.1%	1.1
Elgin	5.7%	4.4%	1.3
Kankakee	5.9%	5.0%	0.9
Lake-Kenosha, IL-WI	4.9%	4.0%	0.9
Peoria	5.7%	4.8%	0.9
Rockford	6.3%	4.9%	1.4
Springfield	5.0%	3.9%	1.1
St. Louis (IL-Section)	4.9%	4.1%	0.8
Illinois Statewide	4.4%	4.7%	-0.3
* Data subject to revision.			

CHICAGO—Unemployment rates increased over-the-year in December in thirteen of Illinois's metropolitan areas, and decreased in one, according to preliminary data released today by the U.S. Bureau of Labor Statistics (BLS) and the Illinois Department of Employment Security (IDES). Data also show nonfarm jobs increased in twelve of the metropolitan areas.

"The new administration is committed to growing the economy and creating good jobs in regions across the state," said **Deputy Governor Dan Hynes**. "Governor Pritzker has taken action in his first weeks in office to support working families and help prepare workers for employment in growing industries. Our top priority is getting the state's economy back on track and the governor looks forward to continuing to work with business leaders and workers to build a thriving state."

Illinois businesses added jobs in twelve metro areas, with the largest percentage increases in: Kankakee (+5.0 percent, +2,400), Lake-Kenosha (+2.3 percent, +9,700), Davenport-Moline-Rock Island (+1.2 percent, +2,200), and Chicago-Naperville-Arlington Heights (+1.1 percent, +41,500). The Springfield MSA saw a decrease over-the-year (-0.4 percent, -400).

The industry sectors recording job growth in the majority of metro areas included Transportation, Warehousing and Utilities (10 of 14), Education and Health Services (10 of 14), Leisure and Hospitality (10 of 14), Mining and Construction (9 of 14), Manufacturing (9 of 14), Professional and Business Services (9 of 14), and Wholesale Trade (8 of 14).

Not seasonally adjusted data compares December 2018 with December 2017. The not seasonally adjusted Illinois rate was 4.4 percent in December 2018 and stood at 12.2 percent at its peak in this economic cycle in January 2010. Nationally, the not seasonally adjusted unemployment rate was 3.7 percent in December 2018 and 10.6 percent in January 2010 at its peak. The unemployment rate identifies those who are out of work and looking for work and is not tied to collecting unemployment insurance benefits.

Total Nonfarm Jobs (Not Seasonally Adjusted) – December 2018

Metropolitan Area	December 2018*	December 2017**	Over-the-Year Change
Bloomington MSA	94,100	94,100	0
Carbondale-Marion MSA	57,700	57,600	100
Champaign-Urbana MSA	113,400	112,500	900
Chicago-Naperville-Arlington Heights Metro Division	3,817,800	3,776,300	41,500
Danville MSA	28,400	28,300	100
Davenport-Moline-Rock Island MSA	189,300	187,100	2,200
Decatur MSA	52,000	51,500	500
Elgin Metro Division	263,200	260,900	2,300
Kankakee MSA	50,400	48,000	2,400
Lake-County-Kenosha County Metro Division	426,200	416,500	9,700
Peoria MSA	172,600	172,200	400
Rockford MSA	153,900	153,000	900
Springfield MSA	112,500	112,900	-400
Illinois Section of St. Louis MSA	242,600	241,300	1,300
Illinois Statewide	6,189,400	6,117,400	72,000

*Preliminary **Revised

###





SOURCE: SITE SELECTION SURVEY OF CORPORATE EXECUTIVES, OCTOBER 2018

Most Important Location Criteria

- Workforce Skills
- Transportation Infrastructure
- Workforce Development
- Higher Education Resources
- Utilities



- ***Site Selection* magazine survey**
- **60 responses**
- **Intensifying emphasis on Workforce and Workforce Readiness**
- **EDCs are doing an inadequate job of providing that data**

COMMITTEE/BOARD PARTICIPATION 2019

**RESearch Kankakee County, IL – Development Showcase
DIG Bourbonnais @ Chicago Bears Training Camp
City of Kankakee Riverfront Implementation Team
United Way Campaign 2019
Rep. Lindsay Parkhurst Business Advisory Council
Samaschool + Kankakee – Growing the Gig Economy
Illinois Route 50 Corridor Study
Northfield Square Mall Redevelopment Task Force
Kankakee County Convention & Visitors Bureau
Community Foundation of Kankakee River Valley
Grundy Livingston Kankakee Workforce Board Talent Outreach Committee
Workforce Partners of Metropolitan Chicago (WPMC) Regional Apprenticeship Navigator partner
Kankakee Area Human Resource Managers' Association marketing partner
Kankakee Community College Business/Office Professional Advisory Committee
Kankakee Community College Manufacturing Technology Advisory Committee
Education & Employment Action Team for the Partnership for a Healthy Community's MAPP initiative
Kankakee Area Career Center Executive Advisory Committee**

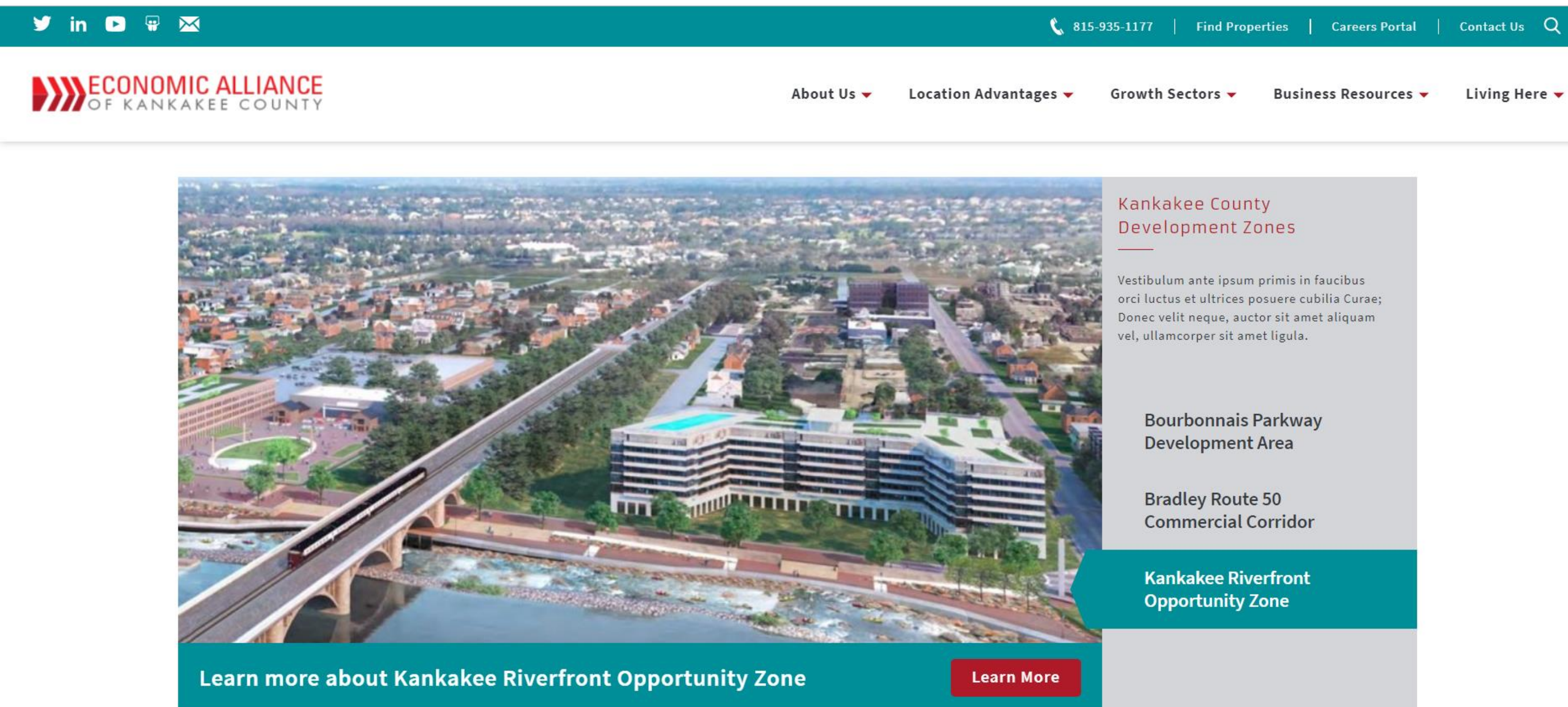


Photo courtesy *Daily Journal*



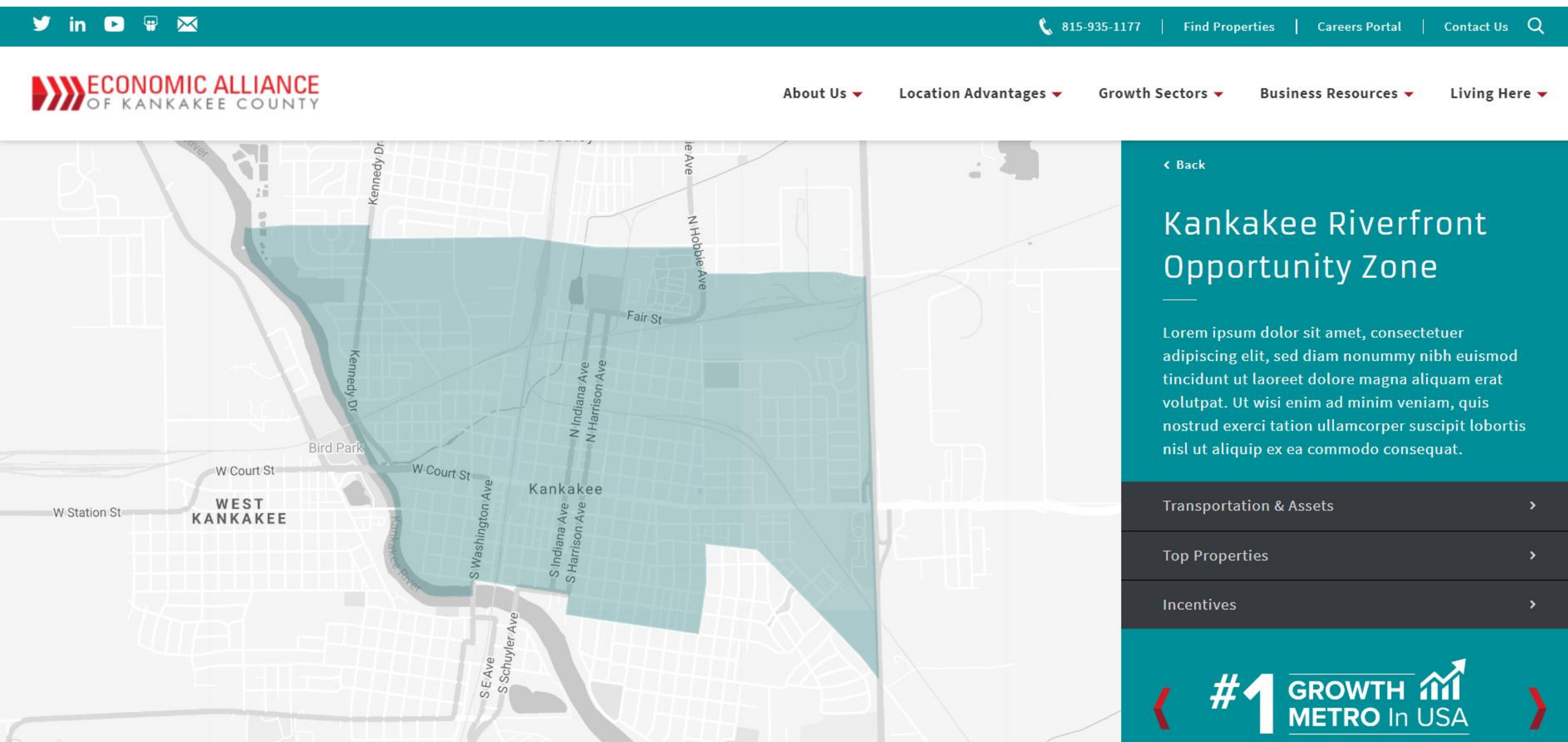
- **Kankakee Community College selects new president – Dr. Michael Boyd**
- **Current Vice President of Instructional & Student Success and Chief Academic Officer for KCC**
- **Boyd succeeds Dr. John Avendano, who concludes 10 years of service on June 30.**

KANKAKEE RIVERFRONT OPPORTUNITY ZONE



- Redeveloped Alliance site will be an improved funnel for development leads
- Three metro development areas and available properties highlighted in 2019
- Tool is expandable to include additional development areas
- Refreshed site to launch by March 1

KANKAKEE RIVERFRONT OPPORTUNITY ZONE



- **Six featured properties**
- **Transportation and education assets**
- **Available incentives**
- **Latest development news**
- **Leading local indicators**
- **Mobility score**

BRADLEY ROUTE 50 COMMERCIAL CORRIDOR



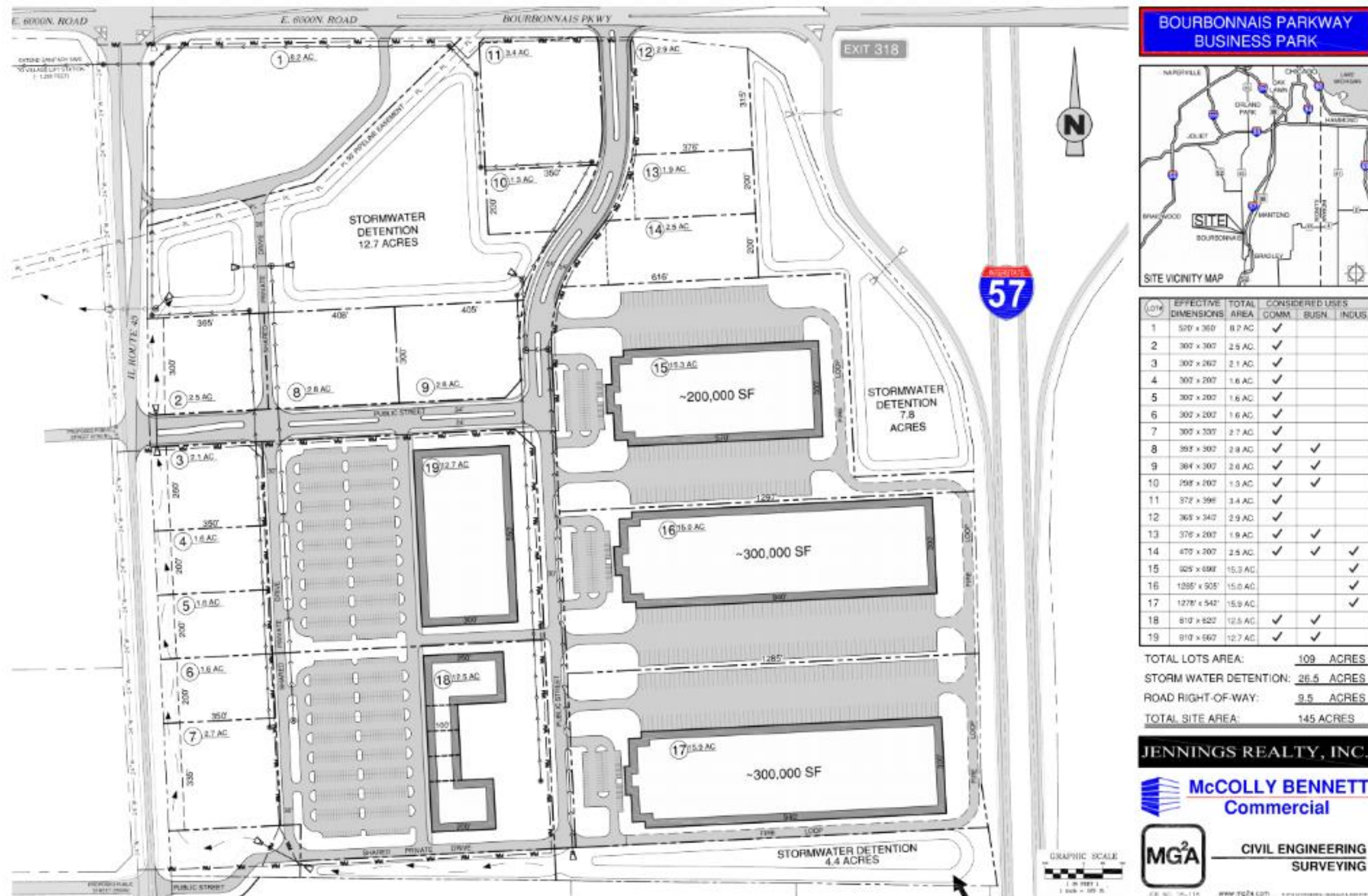
GWDC Municipal Redevelopment Study & Guide for Northfield Square Mall

- Fact finding and consensus building
- Due diligence and redevelopment strategy
- ETD 4-1-19

Hitchcock Design Group Route 50 Corridor Study

New Position: Transportation & Economic Development Project Coordinator

BOURBONNAIS PARKWAY DEVELOPMENT AREA



- Development plan complete
- 3,000 acres
- 1,400 acres industrial TIF property
- Utilities in place
- 5-year property tax abatement for qualifying new construction



Development Showcase for
USA's #1 Growth Metro*

Thursday, April 4, 2019

7:30 a.m. - 11:30 a.m.

Northfield Square Mall Atrium

- Sponsorship opportunities available
- Dedicated event website to launch the week of February 18
- Showcase of overall market; major projects; Metro Development Zones, properties and plans; and relevant incentives and financing opportunities
- **Moderated Industry Panel**, with expansion updates
- **Moderated Mayors' Panel**, with investment updates
- **Exhibits**, featuring prime Metro Development Zones and properties
- **Vendor booths**
- Buffet breakfast
- **SPONSOR CONTACT:** [Lisa Wogan](#)



815.935.1177 kankakeecountyed.org



CSL BEHRING EXPANSION

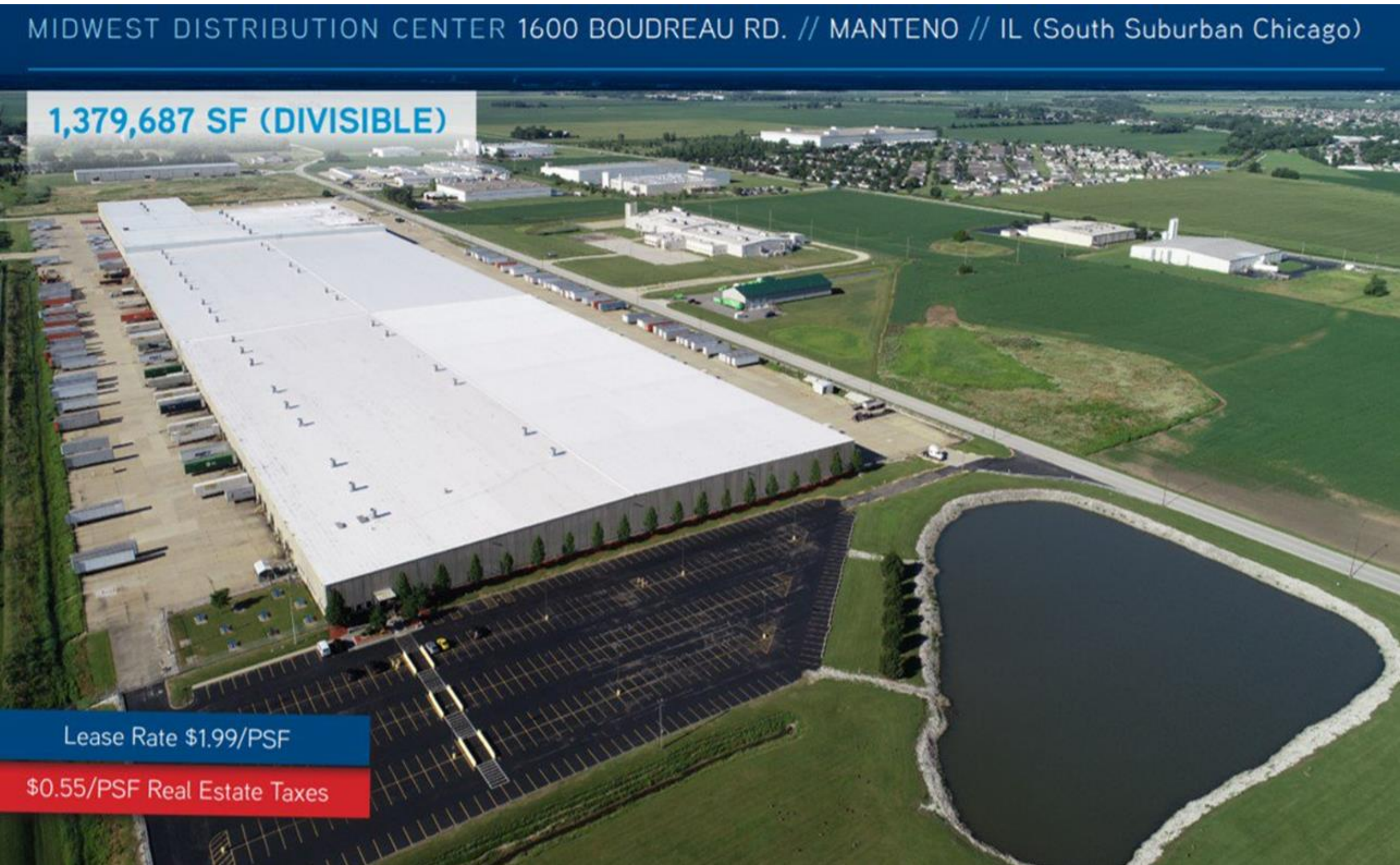


- 1.8 million square foot production expansion on Illinois Route 50
- Dubbed “CSL South 2030” – 10-12 year investment horizon
- 2,000 construction jobs anticipated over next 7 years; FTE to be determined
- Currently completing engineering design and building out interior roads, utility systems
- Establishing contractor village
- Construction expected to commence Q3 2019

NUCOR STEEL EXPANSION



- **NEW \$180 million merchant bar quality (MBQ) mill at Bourbonnais, IL, site**
- **Late 2019 operation startup anticipated**
- **330 current FTE anticipated to grow to 380 by Q4 2019**
- **500 interviews in January entry-level hiring pool**
- **Highest demand: Mechanical & electrical technicians and management**



- **Former Sears Holdings/Innovel property available for lease with May 2019 occupancy**
- **Divisible to 250,000 square feet**
- **CLICK IMAGE to visit Colliers property site**
- **Per WARN notice, Innovel Solutions is permanently ceasing operations at the site, with 143 employee separations beginning on or about 3-22-19.**
- **Kankakee Workforce Services has initiated Rapid Response process.**

One Cigna Drive, Bourbonnais

- Continuing to provide wage data to ownership
- **CLICK IMAGE** for property specifications

Kankakee Opportunity Zone Multifamily Development

- Provided feasibility data to developer

State of Illinois RFI: Canadian food processor, \$6M capex, 58 FTE immediate/121 3-5 year FTE

- Prepared response for one Village of Bradley property

Continuing to field inquiries from solar developers



Photo courtesy *Daily Journal*



- **NEW: Steam Hollow Brewing Co.**
- **Village of Manteno**
- **7,500 square feet**
- **10-barrel microbrewery and taproom**
- **Live music venue**

- Alliance-hosted tour of Van Drunen Farms/FutureCeuticals' new Engineering Department offices Downtown Momence
- Historic Tax Credit rehabilitation project
- HTC also available Downtown Kankakee
- [CLICK HERE](#) to access slide deck for project & HTC details.



STATE OF THE ECONOMY PRESENTATIONS

**Gathering Point Church
Kankakee County Board
Kankakee County Automotive Trades Association
Kankakee County Hotel Lodging Association
Peotone School District**

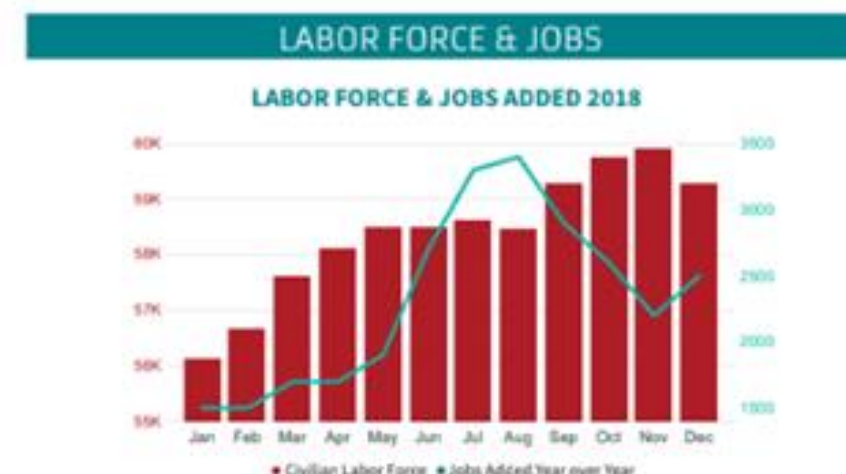
**To schedule a State of Economy presentation for your leadership staff or board of directors,
contact the Economic Alliance at 815.935.1177.**

MARKETING MATERIALS

2019 MARKET PROFILE KANKAKEE COUNTY, IL

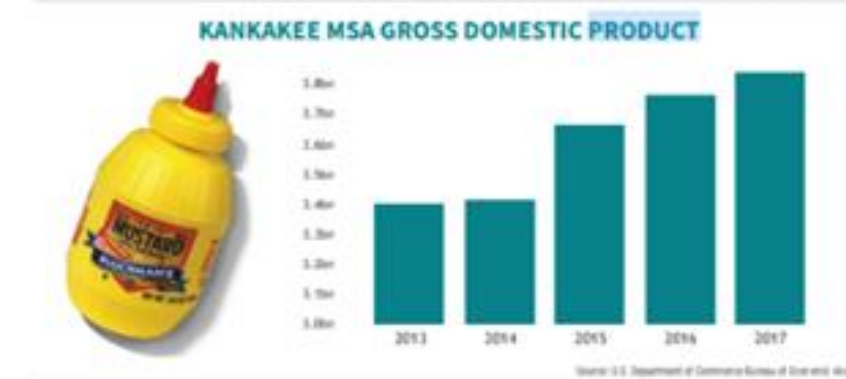


**ECONOMIC ALLIANCE
OF KANKAKEE COUNTY**



TOP SECTOR GROWTH SNAPSHOT

Industry	Rank	% Growth	Total Jobs
Professional Business Services	2	13.7%	5,800
Health Services & Private Education	7	8.2%	10,600
Manufacturing	17	7.7%	7,000
Overall Employment	3	5.7%	50,200



STEM OCCUPATION GROWTH 2014-2019

Occupation	2014 Jobs	2019 Jobs	% Change	Annual Openings
Registered Nurses	1,308	1,566	20%	122
Inspectors, Testers, etc.	369	505	37	77
Industrial Machinery Repair & Maintenance	326	438	34	55
Life, Physical, & Social Science Occupation	328	417	27	57
Management Analysis	113	199	76	30
Computer User Support Specialists	113	157	39	18
Computer Network Support Specialists	59	83	41	10
Locomotive Engineers	59	71	20	10



**CLICK IMAGES for download.
Contact the Alliance or Convention &
Visitors Bureau for print quantities.**

**ECONOMIC ALLIANCE
OF KANKAKEE COUNTY**

815.935.1177 kankakeecountyed.org

VisitKankakeeCounty.com



- **NEW 6-month Content Marketing campaign with 5:15 Media**
- **Project of GLKWB Talent Outreach Committee**
- **Partners include River Valley Metro and villages of Bradley and Manteno**
- **CLICK IMAGE for sample piece.**



Blane White and his wife, Natalie, are opening a 10-barrel brewhouse in this 7,500-square-foot space in Manteno, Ill.

New Brewery Set To Open In Manteno In 2019

Published on July 20, 2018



Jay "Buck" Tamblyn | [✓ Following](#)
Commercial Broker with McColly Bennett
Commercial
[4 articles](#)



64



7



6

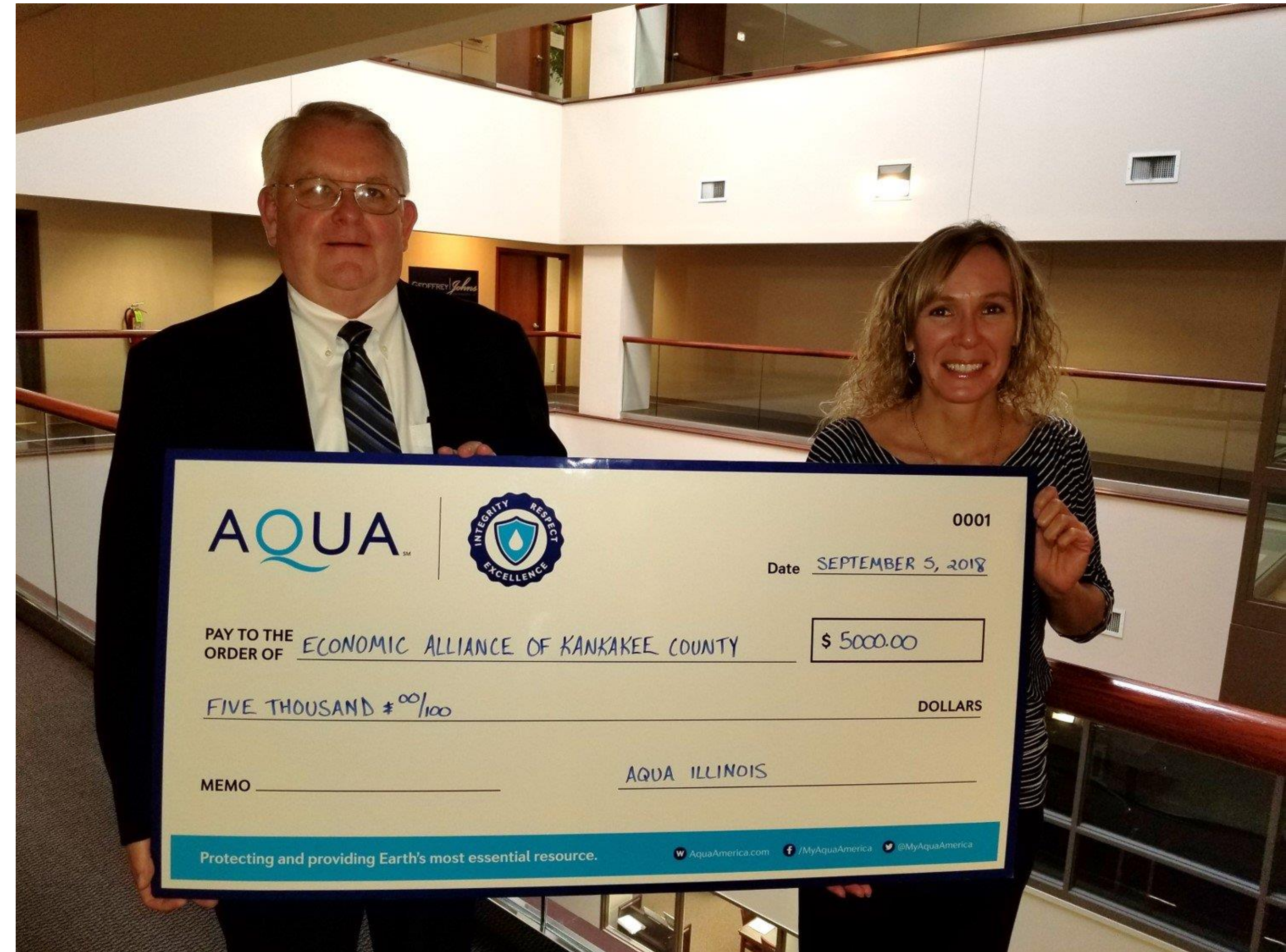
In a warehouse next to Interstate 57 in Manteno, Ill., a mountain man from the Pacific Northwest is working solo in the late morning — save for his two children, who are running laps around the mostly empty 7,500-square-foot space.

CALENDAR 2019

U of I Alumni: Politics and Power: Changes Ahead in Washington, D.C., and Chicago	February 9
Bear Construction Open House, Bradley	February 13
Junior Achievement Executive Partner Meeting, Schaumburg	February 27
Select Chicago Foreign Direct Investment 101, Elk Grove Village	February 28
Communityworks Grant Applications DUE	March 8
Black Business Council Access to Capital panel, Kankakee Public Library	March 12
RESearch Kankakee County, IL – Development Showcase	April 4
Alliance Board of Directors (Location TBD)	April 11
IL Economic Development Association Site Selector Forum & General Consul Reception	April 16
Alliance Board of Directors, ONU, Bourbonnais	June 13
Alliance Board of Directors, ONU, Bourbonnais	September 12
Alliance Board of Directors, ONU, Bourbonnais	November 14

2019 INVESTOR APPEAL

- \$50,000 goal
- Appeal letters out in February
- **CLICK IMAGE** to access Alliance investor list.





815.935.1177 kankakeecountyed.org

President/CEO Timothy Nugent